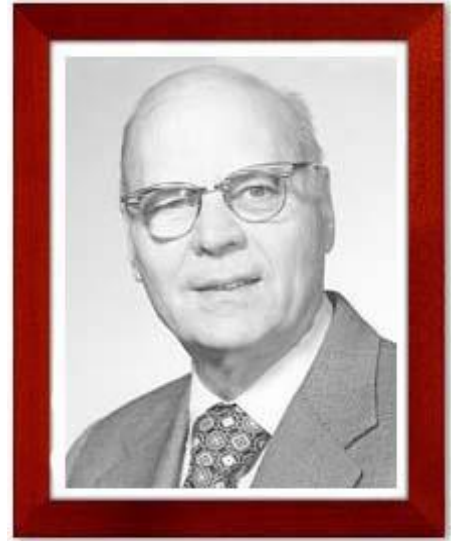


Former Agricultural Economics Faculty

DON PAARLBERG (1911-2006)

Dr. Don Paarlberg rose to prominence as a dedicated and revered teacher, researcher, and administrator in the fields of price analysis and agricultural policy. Don joined the Purdue faculty in 1946. He is widely known as an expert in American farm policy. In 1953 he was called upon to serve as Economic Advisor to Secretary of Agriculture, Ezra Taft Benson. In 1957 he was appointed Assistant Secretary of Agriculture, and in 1958 he was named Special Assistant to President Dwight D. Eisenhower. He was instrumental in formulating the Food for Peace Program and was named coordinator of the program. Upon his return to the University in 1961, Professor Paarlberg was named Distinguished Professor and quickly developed a reputation as a truly great teacher--both on and off campus. His contributions as teacher are recognized through awards such as the Sigma Delta Chi Award for the Best of Purdue's Good Teachers (1961), and the Purdue Award for Outstanding Teaching Performance, (1969). Don was elected a Fellow by the American Agricultural Economics Association in 1971. Among Dr. Paarlberg's more than one hundred publications are three books (on *Food*, on *American Farm Policy*, and on *Great Myths in Economics*). Dr. Paarlberg served as Director of Agricultural Economics for the United States Department of Agriculture. In this capacity Don excelled as an outstanding teacher, lecturer, researcher, counselor, and leader. Following his retirement from the Purdue Faculty in 1975 he was designated Professor Emeritus of Agricultural Economics in 1976.



In 2002, Purdue President Martin Jischke presented Dr. Paarlberg with the Order of the Griffin for extraordinary service to Purdue, noting Paarlberg's dedication to "agriculture, teaching, research and public service." The Order of the Griffin is an honor bestowed only by Purdue presidents.

B. S. - Purdue, 1940; M. S. - Cornell, 1943; Ph.D. - Cornell, 1946.