

Registration

(copy as needed)

Forest and Wildlife Field Tour November 7, 2009

Please pay be check to:

Morgan County Purdue Extension
180 S. Main Street, STE 229
Martinsville, IN 46151-1987
Phone: 765-342-1010 Fax: 765-349-5071
Email: cparker@purdue.edu

Registration: \$5 per person. Bus space
is limited - pre-registration is required.

Maximum of 40 registrants

_____ Participants @ \$5 each = \$_____

Name

Address

City

Zip code

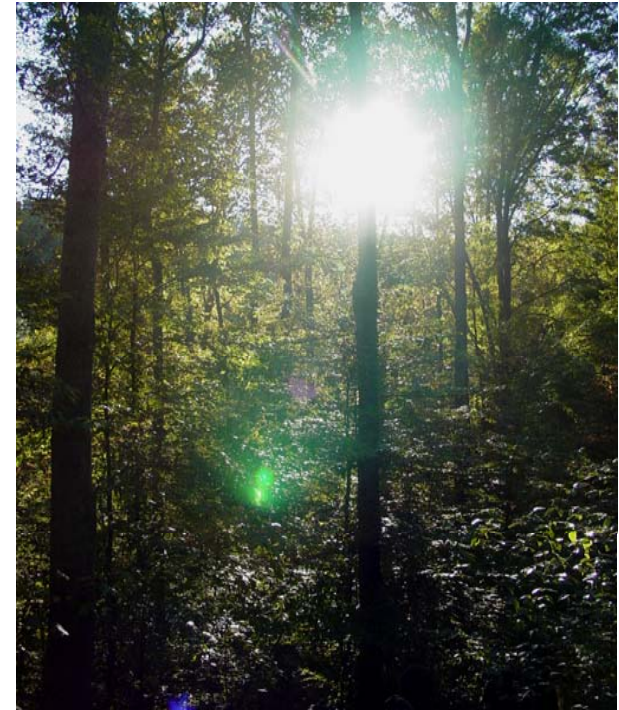
County

Phone

Email

Place
Stamp
Here

Department of Forestry and Natural Resources
Purdue University
715 West State Street
West Lafayette, IN 47907



Forest and Wildlife Field Tour

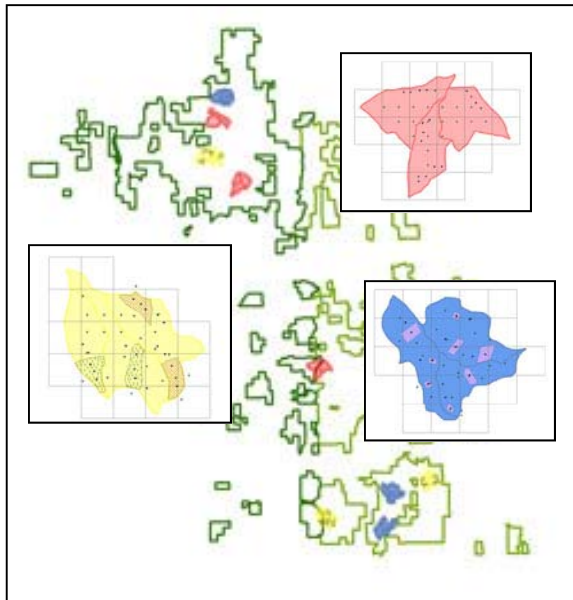
November 7, 2009
Martinsville, IN

Overview

This program will benefit those who own very small acreages (10 acres or less) to those who own larger forestland parcels. The field tour will focus on demonstration and research sites at Morgan-Monroe State Forest as part of the Hardwood Ecosystem Experiment www.HEEForestStudy.org

The program will convene at the Morgan County 4-H Fairgrounds for refreshments and a brief introduction. From there, we will board a bus and ride to tour stops at Morgan-Monroe State Forest.

Please be prepared for field conditions rain or shine. Once in the forest, bus access is limited. Some walking in the woods and trails will be required.



Tour Stops

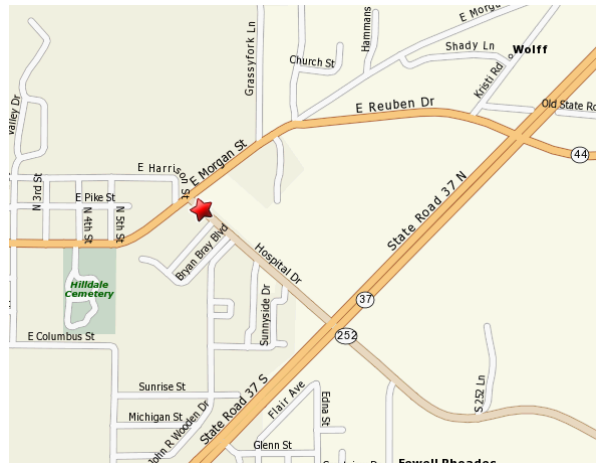
- Timber harvesting strategies and impacts on plants and animals*
- Songbird responses to timber harvesting*
- Deer browsing impacts*
- Timber stand improvements*

Register Early

Space is limited to 40 registrants! Bus transportation to and from Morgan-Monroe State Forest will be provided.

For more information, call (765) 342-1010 or visit www.ag.purdue.edu/fnr/Pages/events.aspx

Morgan County Fairgrounds
1749 Hospital Dr, Martinsville, IN 46151



If you need a reasonable accommodation to participate in this program, prior to the meeting, contact Chris Parker at (765) 342-1010.

Sponsors

Purdue University Department of Forestry & Natural Resources
Morgan County Purdue Extension
Hardwood Tree Improvement and Regeneration Center
Indiana Division of Forestry



PURDUE AGRICULTURE

It is the policy of the Purdue University Cooperative Extension Service that all persons have equal opportunity and access to its educational programs, services, activities, and facilities without regard to race, religion, color, sex, age, national origin or ancestry, marital status, parental status, sexual orientation, disability or status as a veteran. Purdue University is an Affirmative Action institution. This material may be available in alternative formats.

