

Authentication Sign In For an Intranet Site on Internet Explorer

AgIT Development

Procedure No. D2.3.15

Procedure Statement

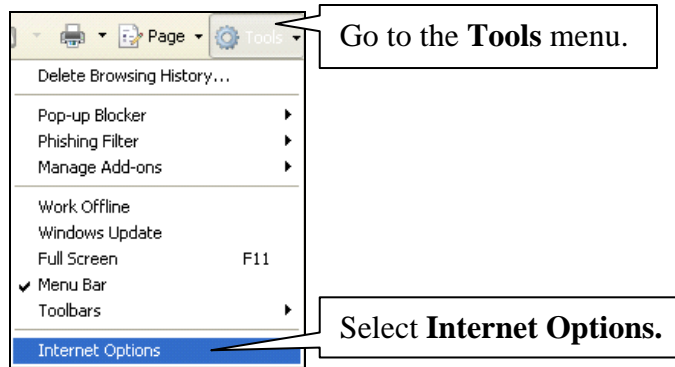
This procedure can be used if it is necessary to access the Intranet frequently for making content changes. It will assist in changing intranet options in order to bypass entering authentication. You will first need to have a valid account.

Procedure Specifics

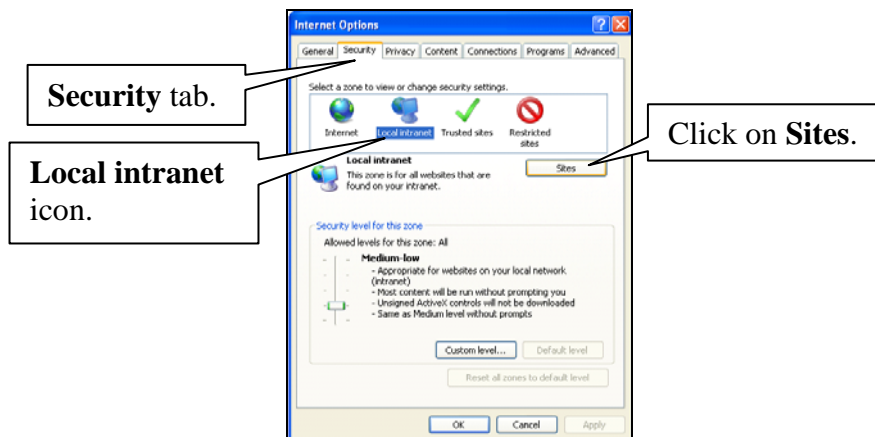
Since the SharePoint server has been moved to www.ag.purdue.edu, it may be useful to add the URL of the new location to your Local Intranet or Trusted Sites. If you haven't already done so, you can also set Internet Explorer to automatically log you into sites in one of these zones with your current username and password.

Adding To Your Local Intranet Zone

1. Go to the **Tools** menu and select **Internet Options**.



2. The **Internet Options** window will appear. Under the **Security** tab, click the **Local intranet** icon, then click on the **Sites** button.



Procedure

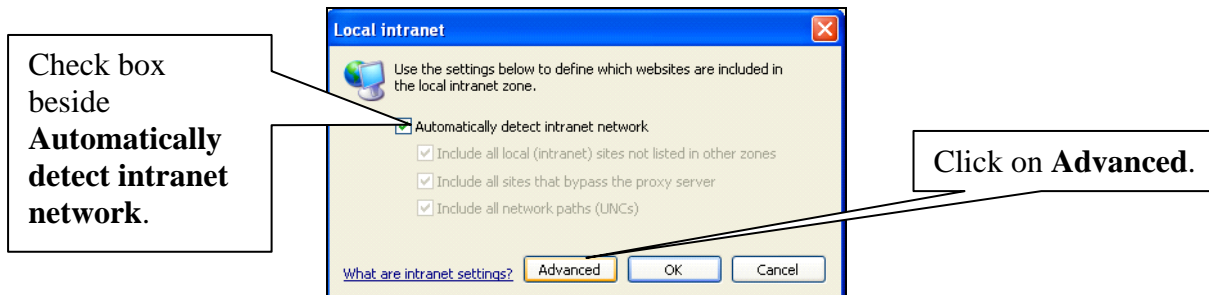
Authentication Sign In For an Intranet Site on Internet Explorer

AgIT Development

Procedure No. D2.3.15

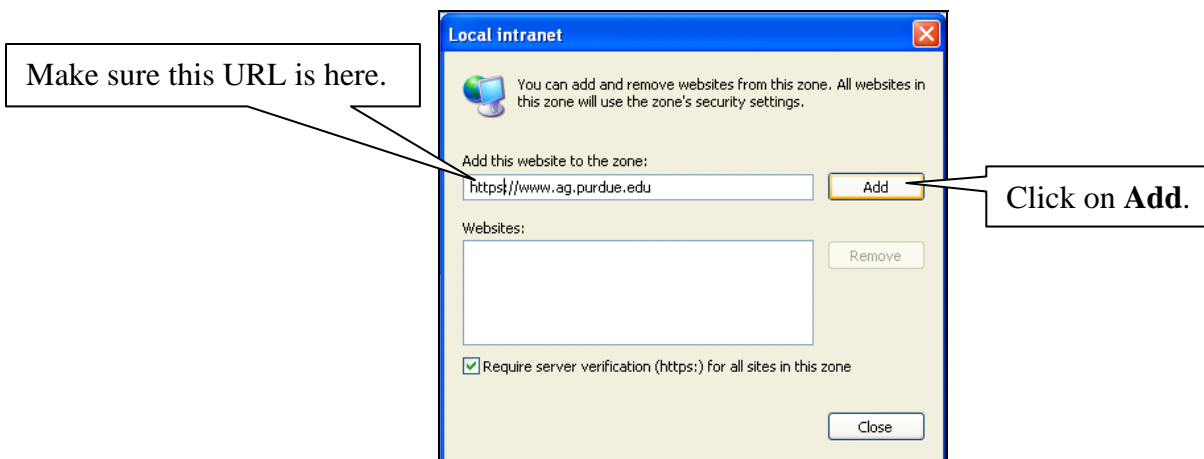
The **Local intranet** window will appear.

- a. Make sure the box beside **Automatically detect intranet network** is checked.
- b. Click on the **Advanced** button.



3. A second **Local intranet** window will appear.

- a. Make sure <https://www.ag.purdue.edu> is in the **Add this website to the zone:** field.
- b. Click on the **Add** button.



NOTE: You may get an error box if you left out the **s** in the **https://** section of the URL. It will read: *Sites added to this zone must use the https:// prefix. This prefix assures a secure connection.* If you get this message, click **OK**, fix the URL by adding the **s**, and then click **Add**.

- c. Click the **Close** button.
- d. Click the **OK** button.
- e. Click the **OK** button again.

Procedure

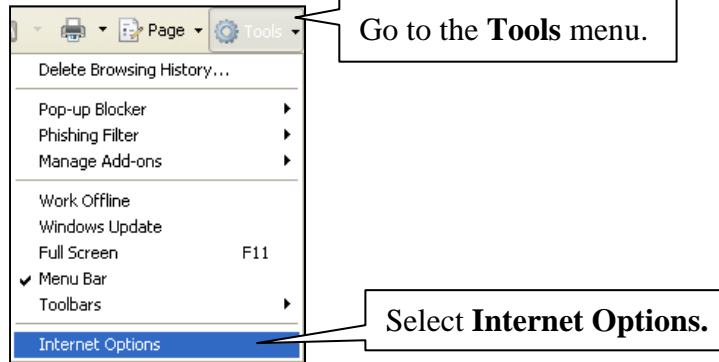
Authentication Sign In For an Intranet Site on Internet Explorer

AgIT Development

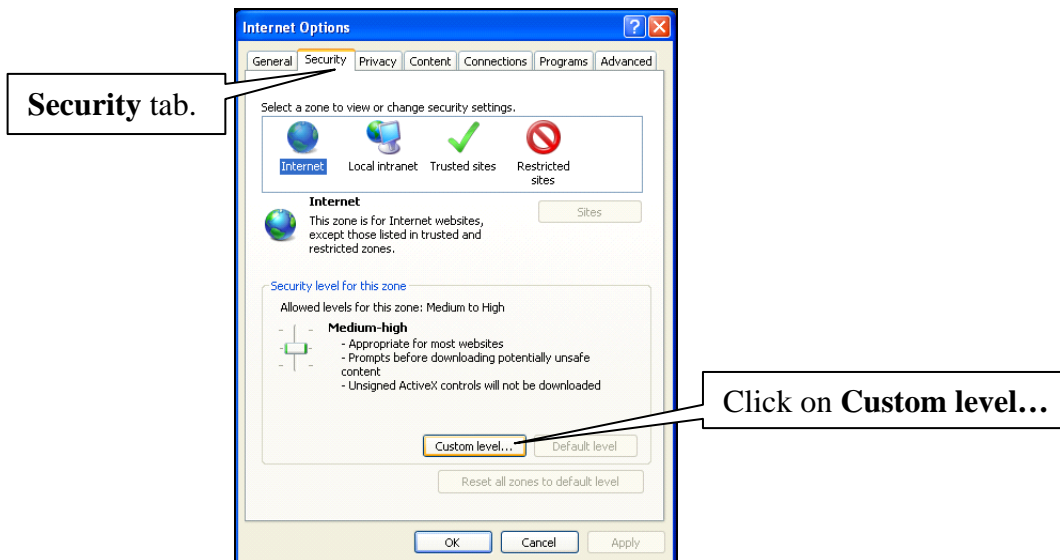
Procedure No. D2.3.15

Setting Internet Explorer To Auto Logon To This Zone

1. Go to the **Tools** menu and select **Internet Options**.



2. The **Internet Options** window will appear. Under the **Security** tab, click the **Custom level...** button.



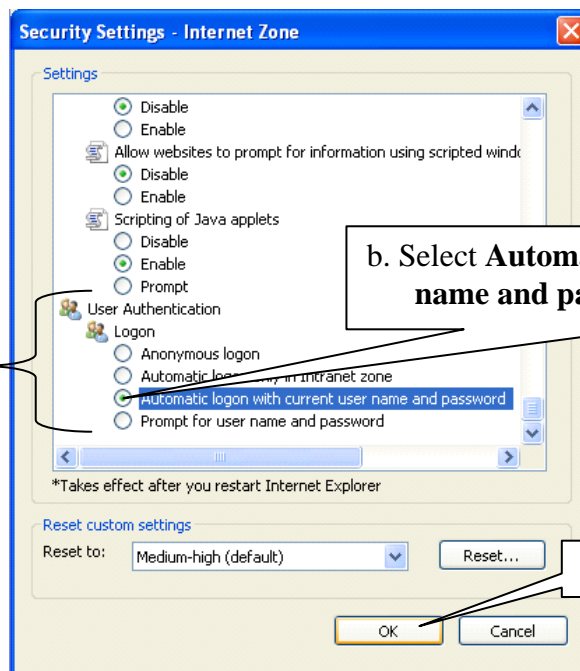
Procedure

Authentication Sign In For an Intranet Site on Internet Explorer

AgIT Development

Procedure No. D2.3.15

3. The **Security Settings – Local Intranet Zone** window will appear.
 - a. Scroll down to the **User Authentication** section.
 - b. Choose the radio button by **Automatic logon with current user name and password**.
 - c. Click the **OK** button.



a. Scroll down to the **User Authentication** section.

b. Select **Automatic logon only with current user name and password**.

c. Click **OK**.

4. Click the **OK** button again.

The next time you log into the Intranet you can bypass user authentication.