

## **AT&T USBConnect Quicksilver Aircard Usage**

AgIT Call Center

*Procedure No.C7.3.47*

### **Procedure Statement**

This procedure will explain how to use an AT&T USBConnect Quicksilver aircard.

### **Procedure Specifics**

This device must be installed under an administrator account. Please call AgIT at 765.494.8333 or <http://sharepoint.agriculture.purdue.edu/agit/default.aspx> for assistance. Device usage can only be completed after installation.

#### *Using an AT&T Aircard*

1. Turn on the computer with the device connected to a USB port.
2. The AT&T Communication Manager should start up automatically. If it does not, use the icon on the desktop to start it.



**Figure 1: AT&T Communication Manager Startup screen**

**Procedure**

# AT&T USBConnect Quicksilver Aircard Usage

AgIT Call Center

Procedure No.C7.3.47

3. The GSM tab on the window will read *Initializing please wait* while the device is starting up.



Figure 2: GSM tab Startup

4. Once the device is ready the **Connect** button will turn orange and the status will read *Ready: 'AT&T'*. Click the **Connect** button.



Figure 3: Connect button

Procedure

## AT&T USBConnect Quicksilver Aircard Usage

AgIT Call Center

Procedure No.C7.3.47

5. Once the device is connected the button will change to say **Disconnect** and the status will read **Connected: 'AT&T'**. You can now use the internet as normal.

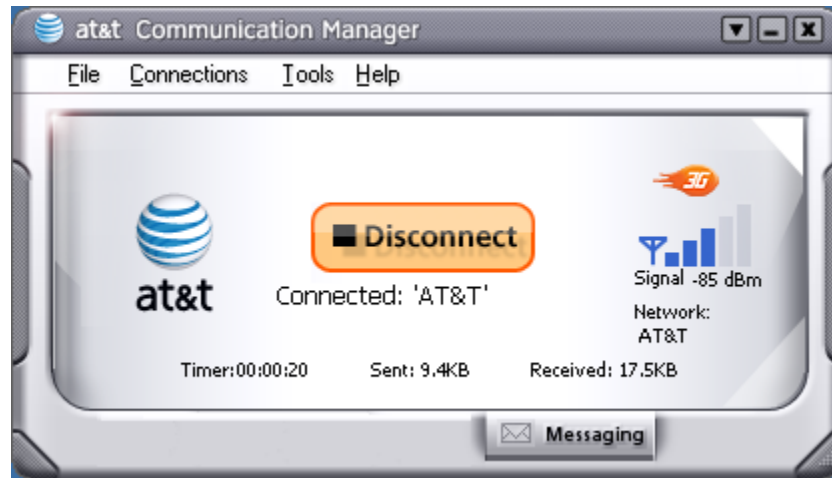


Figure 4: Disconnect button