

Creating a Boot Disk for Imaging at the Counties

AgIT User Support

Procedure No. C7.3.27

Procedure Statement

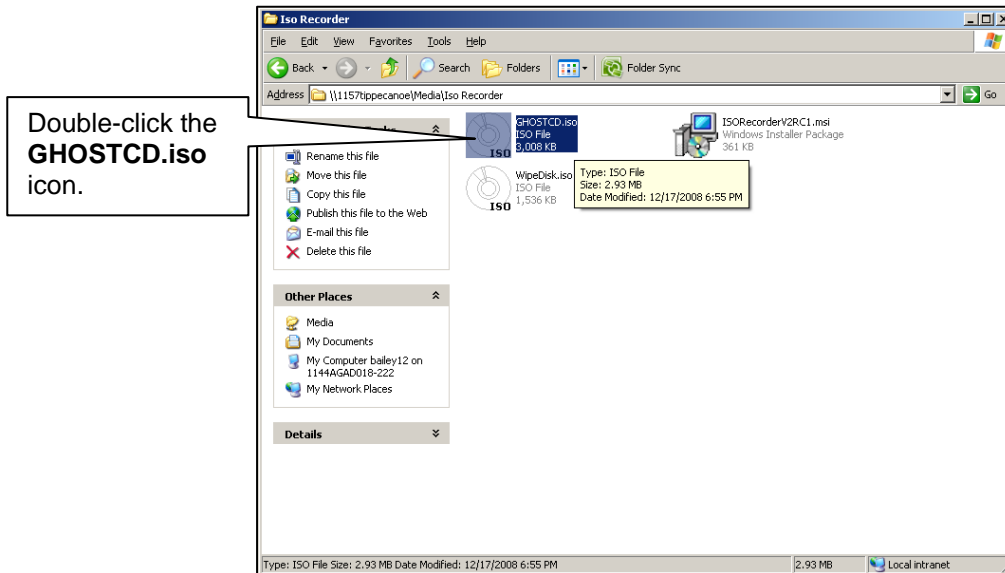
To begin the imaging process, you first need to create a boot disk. The following is a detailed procedure of how to create a boot disk.

Procedure

To create a boot disk, you will need to start in the media folder on the county server and browse to the folder called Iso recorder (\\1157countyname\Media\Iso Recorder).

Creating a Boot Disk

1. Insert a blank CD-RW or CD-R into the computer's drive.
2. Double-click on the **GHOSTCD.iso** icon.



3. On the following screen, make sure that the **image file** source is correct and that the **recorder** has blank writeable media.
4. Click the **Next** button.
5. The recorder will start the copying and burning process. This process should take one to two minutes. The CD should be ejected when the recorder is done, and you will see the following screen. Click the **Finish** button and the boot CD has been created.
6. Label the CD, with permanent marker, "Ghost Boot CD for Re-Images."

Procedure